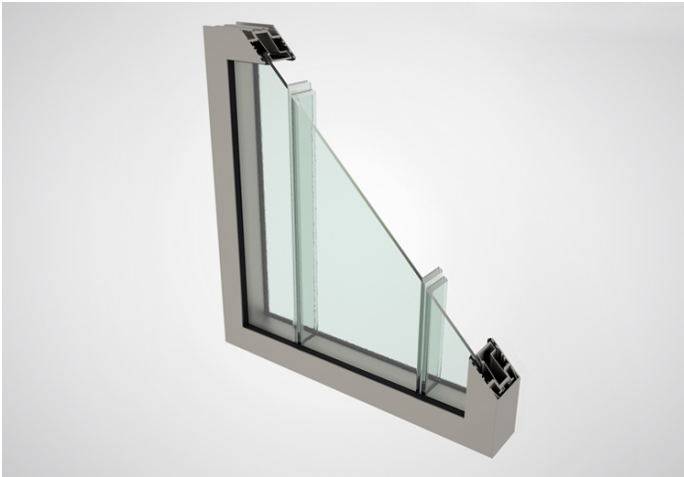


I-41 Interior Channel Glass Frame System (Single-Glazed)



Composition:

Aluminum

Application:

Interior

Installation:

Bendheim channel glass frame systems are relatively easy to install. No specialized training is required. Any competent commercial glazier with curtainwall or storefront installation experience can handle the installation. Bendheim Wall Systems' unique frame design requires the glass be captured at the head & sill only.

Approx Dimensions:

Fabricated to size in stock lengths up to 21 ft. (6.4 m); longer spans are created by butting / splicing extrusions to one another; Approx. dimensions: Depth = 3.25" (82.5 mm); Height (all components: head, sill, jambs) = 2" (51 mm)

Maintenance:

Bendheim Wall Systems' interior frames are typically supplied with the recommended clear anodized finish, and do not require special maintenance.

Performance Characteristics:

STC Rating: STC 34 (Based on test of I-41 conventional interlocking double-glazed system with push-in gaskets; compare to STC 33 for a typical interior wall, consisting of 1/2" drywall on each side, wood studs, no insulation & STC 39 for an insulated interior wall, consisting of 1/2" drywall on each side, wood studs + fiberglass insulation)

Testing:

Bendheim Wall Systems' frames are tested to stringent North American standards for structural deflection, interstory drift, and severe seismic displacement.

Potential Leed Credit:

- IEQ Credit 8.1: Daylight & Views: Daylight 75% of Spaces
- IEQ Credit 8.2: Daylight & Views: Views for 90% of Spaces

Options & Customizations:

Various Configurations:

- Single-Glazed Conventional
- Single-Glazed Curved
- Single-Glazed Corner
- Single-Glazed Alternating Adjacent
- Single-Glazed Alternating Interlocking (for channel glass with 41 mm flanges – 504 Rough Cast & Clarissimo textures only)
- Double-Glazed Conventional Interlocking (for channel glass with 41 mm flanges – 504 Rough Cast & Clarissimo textures only)
- Double-Glazed Curved (for channel glass with 41 mm flanges – 504 Rough Cast & Clarissimo textures only)
- Double-Glazed Corner (for channel glass with 41 mm flanges – 504 Rough Cast & Clarissimo textures only)
- Double-Glazed Midpoint-to-Midpoint (for channel glass with 41 mm flanges – 504 Rough Cast & Clarissimo textures only)

Custom colors (two-coat Kynar) can be specified in a variety of finishes and a virtually unlimited palette to match other architectural finishes on the project. The desired color can be specified by providing a paint manufacturer's color swatch, including PPG, Valspar, Benjamin Moore, and Sherwin Williams swatches.