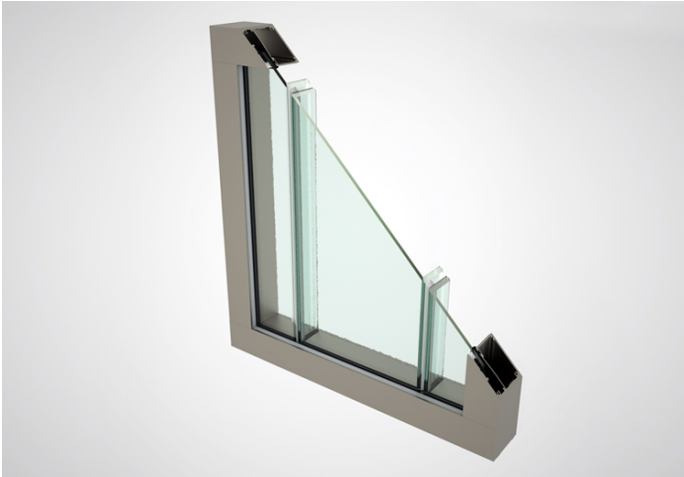


## SF-60S Exterior Channel Glass Frame System for Ventilated Facades (Single-Glazed)

---



### Composition:

Aluminum

### Application:

Exterior

### Installation:

Bendheim channel glass frame systems are relatively easy to install. No specialized training is required. Any competent commercial glazier with curtainwall or storefront installation experience can handle the installation. Bendheim Wall Systems' unique frame design requires the glass be captured at the head & sill only.

### Approx Dimensions:

Fabricated to size in stock lengths up to 21 ft. (6.4 m); longer spans are created by butting / splicing extrusions to one another; Approx. dimensions: Depth = 3.25" (825 mm); Height (all components: head, sill, jambs) = 2.3" (58.5 mm)

### Maintenance:

Bendheim Wall Systems' exterior frames do not require special maintenance. They are typically supplied with the recommended two-coat Kaynar finish, applied through a thermal process. The finish protects all frame components exposed to the elements, and is durable and scratch-resistant.

## Testing:

Bendheim Wall Systems' frames are tested to stringent North American standards for air & water infiltration, structural deflection, interstory drift, and severe seismic displacement.

## Potential Leed Credit:

- IEQ Credit 8.1: Daylight & Views: Daylight 75% of Spaces
- IEQ Credit 8.2: Daylight & Views: Views for 90% of Spaces

## Options & Customizations:

Various Configurations:

- Single-Glazed Conventional
- Single-Glazed Curved
- Single-Glazed Corner

Custom colors (two-coat Kynar) can be specified in a variety of finishes and a virtually unlimited palette to match other architectural finishes on the project. The desired color can be specified by providing a paint manufacturer's color swatch, including PPG, Valspar, Benjamin Moore, and Sherwin Williams swatches.

