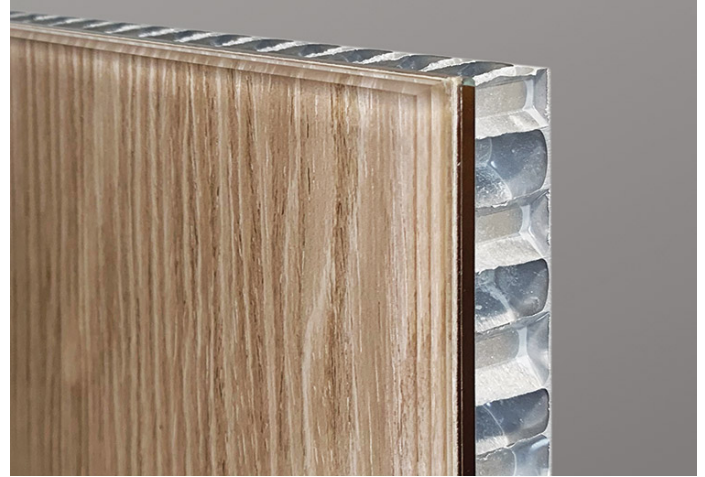


Honeycomb Backing for HexaLite™ Glass Cladding



Composition:

Aluminum (safety-laminated to glass)

Application:

Interior

Installation:

Bendheim's pre-assembled honeycomb-reinforced HexaLite glass panels install easily with our Z-KISS system or traditional Z-clips. HexaLite panels in 3/4" overall thickness are also compatible with most standard wall cladding frame systems on the market.

Approx Dimensions:

Pre-assembled and cut-to-size; max. size = 60" by 96" (1.5 m x 2.5 m) or 48" by 120" (1.2 m x 3 m), depending on the glass type; thickness = 1/4" (6 mm), 3/8" (10 mm), and 1/2" (12 mm) + the thickness of the glass.

Approx Weight:

1 lbs/ft² (5 kg/m²) + the weight of the glass

Maintenance:

Bendheim's pre-assembled honeycomb-reinforced glass panels are easy to maintain. We suggest cleaning the glass surface with warm water and a lint free cloth (terry cloth). Conventional nonabrasive glass cleaners may also be used.

Testing:

Bendheim's honeycomb-reinforced glass cladding passes the ANSI Z97.1 & CPSC 16 CFR 1201 400 lbf (foot-pound) impact assessment safety glazing tests completely intact, showing no visible breakage, cracks, or damage to the tempered glass surfaces, after being hit with a 50-pound ball dropped from a height of 4 feet.