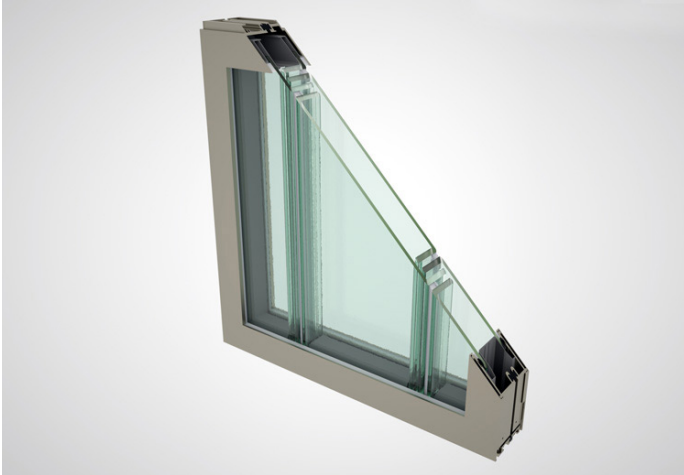


SF-60 Exterior Channel Glass Frame System (Double-Glazed)



Composition:

Aluminum

Application:

Exterior

Installation:

Bendheim channel glass frame systems are relatively easy to install. No specialized training is required. Any competent commercial glazier with curtainwall or storefront installation experience can handle the installation. Bendheim Wall Systems' unique frame design requires the glass be captured at the head & sill only.

Approx Dimensions:

Fabricated to size in stock lengths up to 21 ft. (6.4 m); longer spans are created by butting / splicing extrusions to one another; Approx. dimensions: Depth = 4" (101.5 mm); Height (all components: head, sill, jambs) = 2.3" (58.5 mm)

Maintenance:

Bendheim Wall Systems' exterior frames do not require special maintenance. They are typically supplied with the recommended two-coat Kaynar finish, applied through a thermal process. The finish protects all frame components exposed to the elements, and is durable and scratch-resistant.

Testing:

Bendheim Wall Systems' frames are tested to stringent North American standards for air & water infiltration, structural deflection, interstory drift, and severe seismic displacement.

Potential Leed Credit:

- EA Credit 1: Optimize Energy Performance
- IEQ Credit 7.1: Thermal Comfort – Design
- IEQ Credit 8.1: Daylight & Views: Daylight 75% of Spaces
- IEQ Credit 8.2: Daylight & Views: Views for 90% of Spaces

Options & Customizations:

Various Configurations:

- Double-Glazed Conventional Interlocking
- Double-Glazed Mid-Point to Mid-Point
- Double-Glazed Curved
- Double-Glazed Corner

Custom colors (two-coat Kaynar) can be specified in a variety of finishes and a virtually unlimited palette to match other architectural finishes on the project. The desired color can be specified by providing a paint manufacturer's color swatch, including PPG, Valspar, Benjamin Moore, and Sherwin Williams swatches.