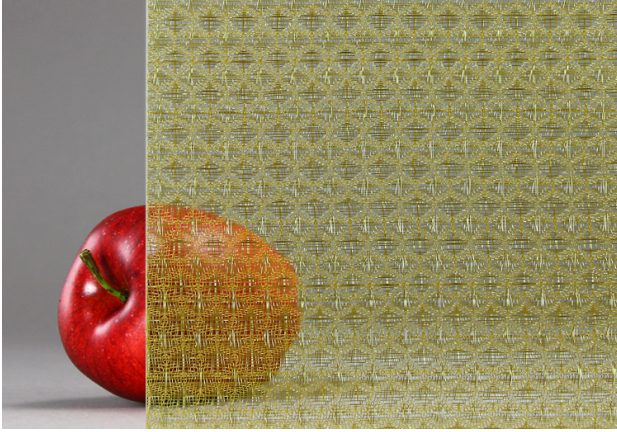


“Anida Gold” by eh Oui | Laminated Architectural Glass



Application:

Interior

Composition:

Low-iron glass; decorative metal interlayer

Approx Dimensions:

Cut-to-size; max. size = 52" x 120" (1.3 m x 3 m); thickness = 5/16" (8 mm). Available in larger sizes and thicknesses up to 3/4" (19 mm) by special request.

Approx Weight:

4 lb/ft² (19.5 kg/m²)

Safety Options:

Laminated, Tempered_laminated

Maintenance:

Bendheim glass is easy to maintain. We suggest cleaning with warm water and a lint free cloth (terry cloth). Conventional non-abrasive glass cleaners may also be used.

Testing:

Bendheim laminated safety glass meets the requirements for ANSI Z97.1 & the Consumer Product Safety Commission CPSC 16FR, Part 1201 – Safety Standard for Architectural Glazing Materials.

Potential Leed Credit:

- EA Credit 1: Optimize Energy Performance
- IEQ Credit 8.1: Daylight & Views: Daylight 75% of Spaces

Options & Customizations:

- Additional colors & designs available
- Laminated to mirror or back-painted for wall cladding applications