



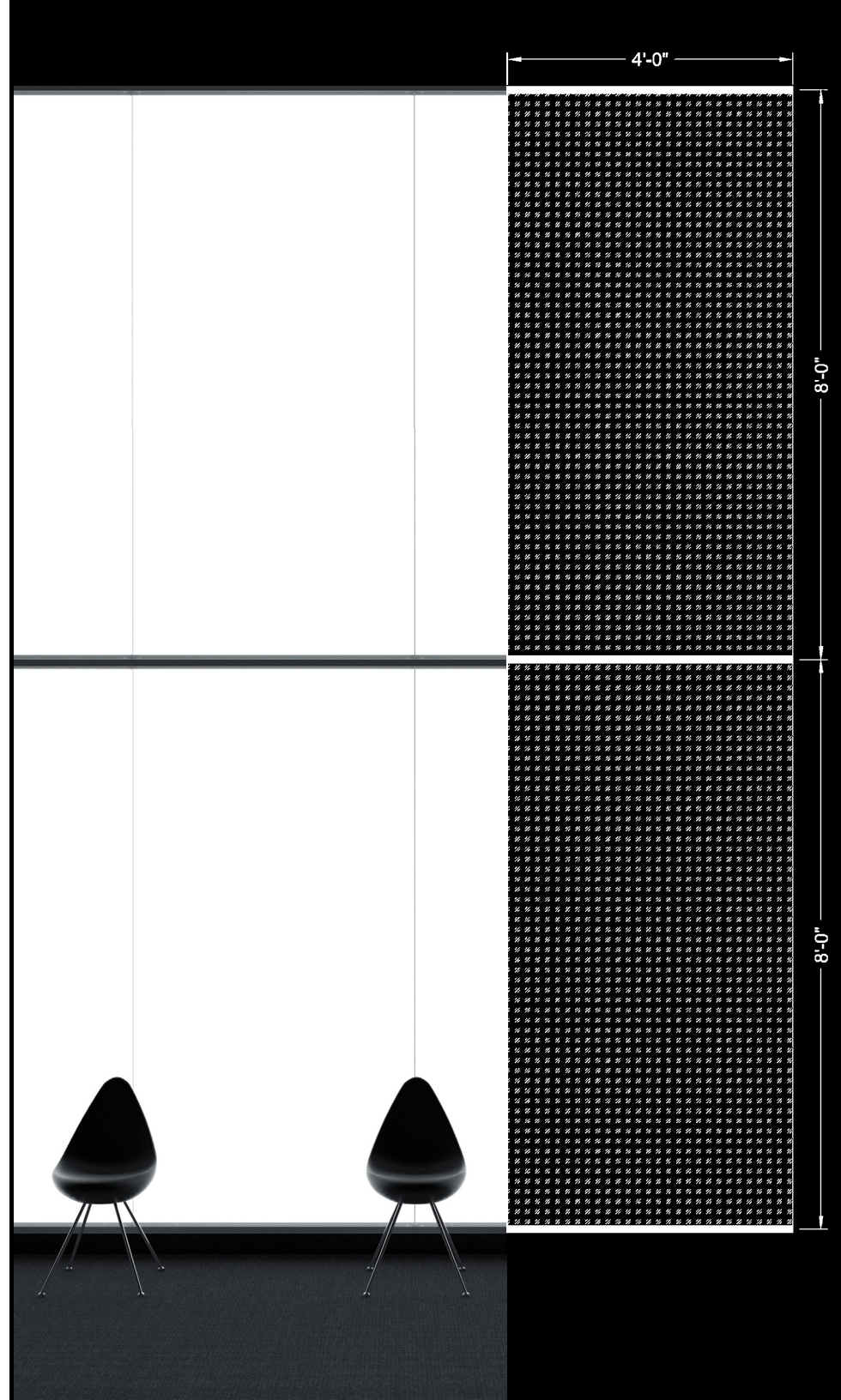
TURN◆KEY | UL Listed Fusion Light Wall System

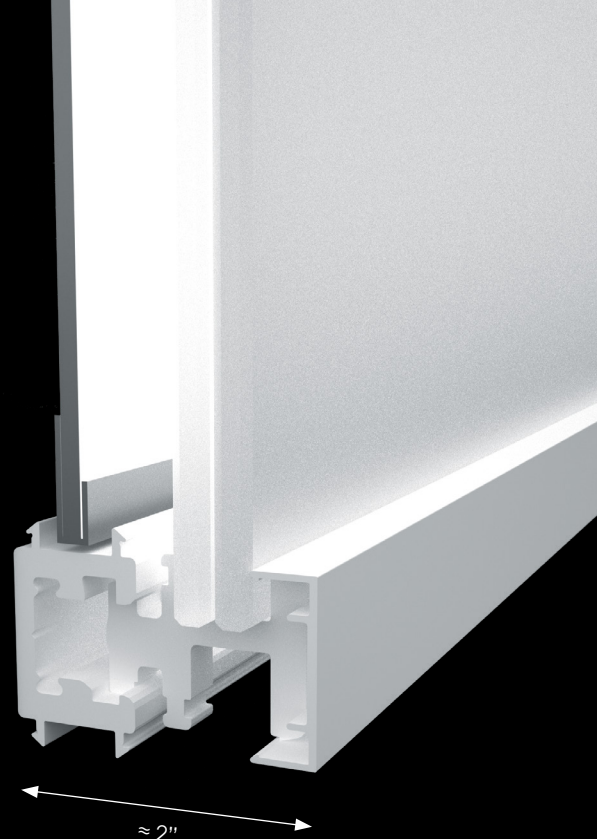
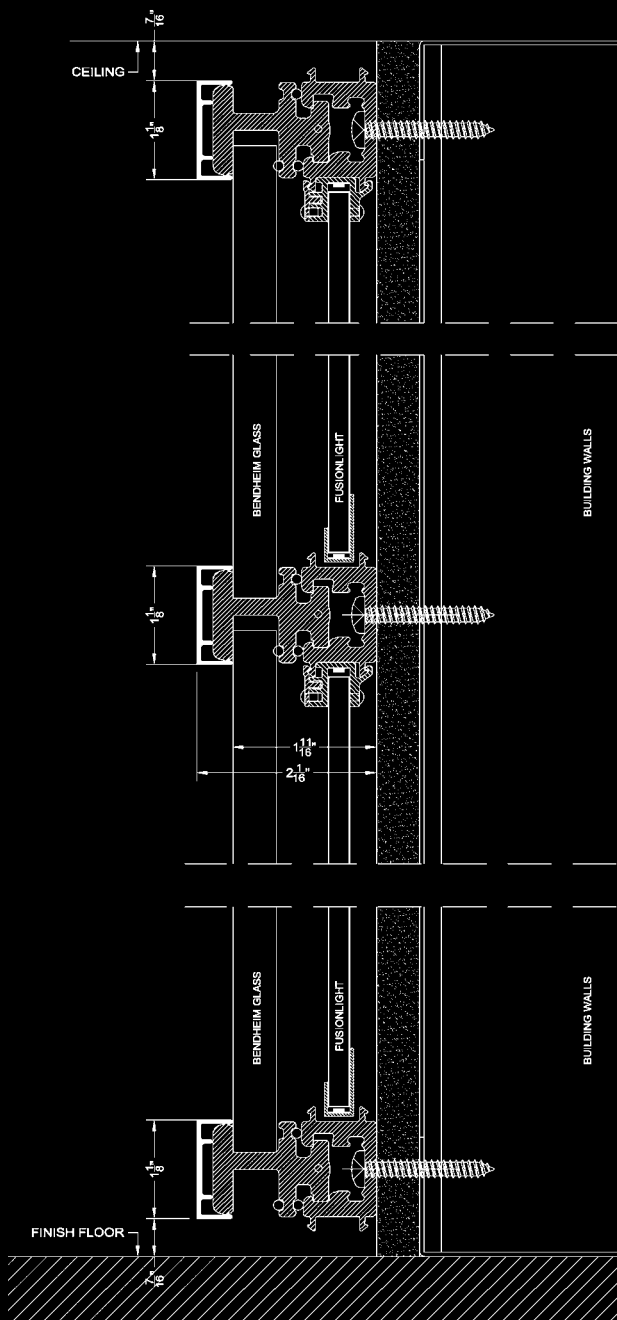
BENDHEIM

BENDHEIM TURNKEY

Fusion Light Wall System

- Uniform back lighting.
- Slim design (approx. 2 inches) saves space.
- Full-height glass panels (up to 8 feet).
- UL listed system – meets codes (IFDR UL 2108 Fixture Certification).
- Energy efficient – up to 170 lumens per watt.
- Cost-effective – fully engineered integrated system.
- Patented quick-assembly – no special tools or training required; easily replace panels to service systems behind the glass.
- Mechanical fastening – no adhesives; circular design.
- Sustainable & demountable – easy to move & repurpose.
- Warranty: 20 years on the hardware; 10 years on Bendheim's tempered or laminated architectural glass; 5 years on the Fusion LED panel lighting.





Bendheim Provides:

- Detail Drawings
- Shop Drawings
- Engineering Calculation
- Wiring Diagram
- Design Assist
- BIM Model
- DWG Drawings
- 3D Renderings
- IES Files
- Assistance with Custom Design, Material Selection and Spec Writing

Dimmable Fusion™ Light Panel

Input Voltage	24VDC, Constant Voltage
Power Consumption	5.85 watts per linear foot of lighted sides
Efficiency	Up to 170 lumens per watt
Color Options	2700K, 3000K, 4000K, 5000K, 6500K, 2700–6500K Tunable White
Operating Temperature	-22°F to 158°F (-30°C to 70°C)
Rated Life	50,000 hours
Ratings	IP20 for dry locations

Case Study

University of Missouri NextGen Precision Health

Design by Burns & McDonnell | Installation by Central Missouri Glass | Photos by Michael Robinson



“

Bendheim was the most cost effective solution for this project and the installation was smooth. The glass is right at the heart of the building and it creates a visually striking appearance. We are proud of this work.

Ray Wells, Owner, Central Missouri Glass

We sought a high quality of light from a technical, space and budget standpoint. Bendheim's system met those criteria. The light quality before the artwork was applied to the glass was incredibly clean and even, virtually no ghosting. Many claim to be able to achieve this, but few truly can, at least not on a budget that every client can afford... The Bendheim system is also engineered in such a way that we were able to integrate it into the building pretty effortlessly and flawlessly.

Clint Blew, Sr. Design Architect, Burns & McDonnell

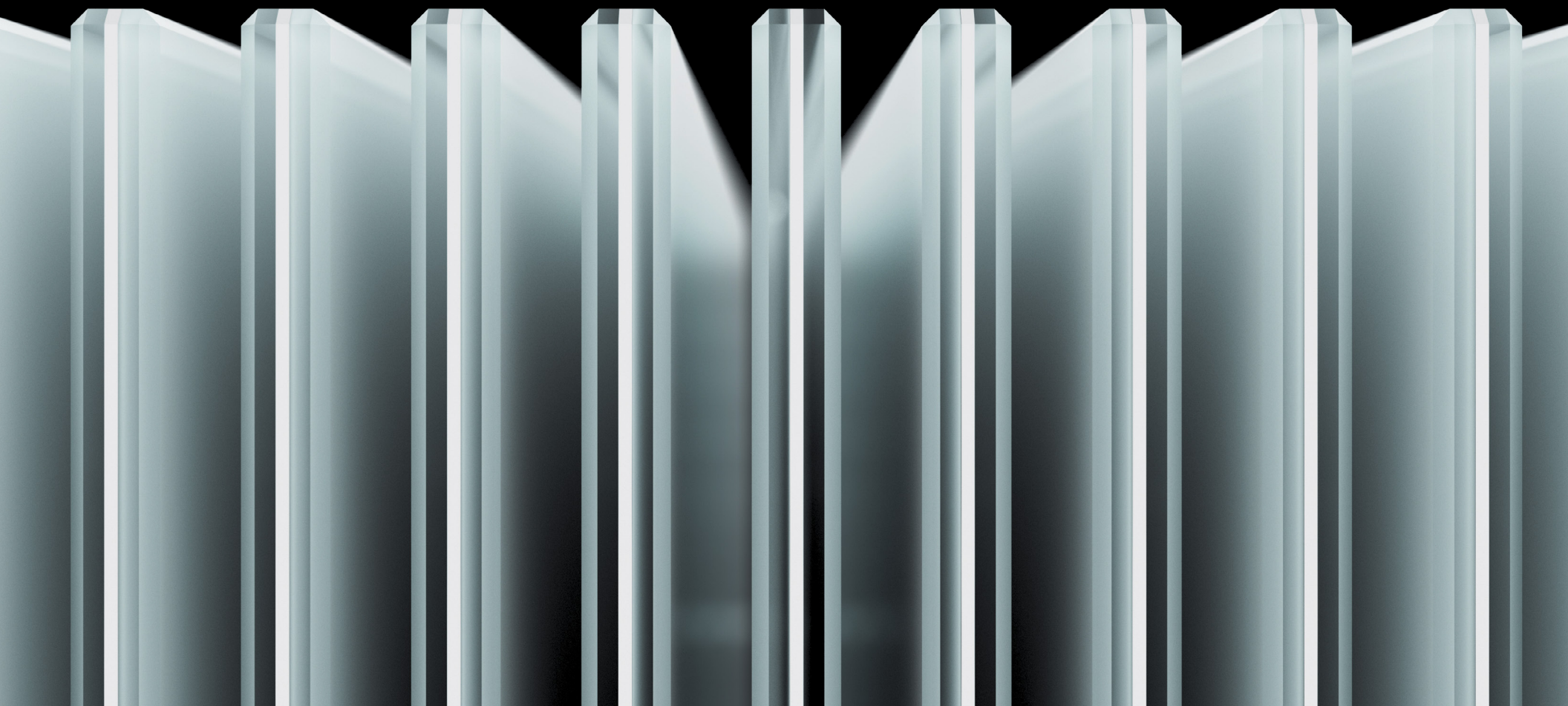


LE'Diffusion™ Safety Glass

- Designed and tested for even, shadow-free LED light dispersion.
- Customizable; available in three standard translucent white options: etched, textured, or clear.
- IES files from the front of the glass are available to assist your lighting design.



Scan for IES files





Engineered | ULListed | Movable | Compact

BENDHEIM

DESIGN LAB
200 Lexington Avenue
New York, NY 10016

HQ & PLANT
82 Totowa Road
Wayne, NJ 07470

T: 800.221.7379
info@bendheim.com
www.bendheim.com

TURN ◆ KEY Fusion Light Wall