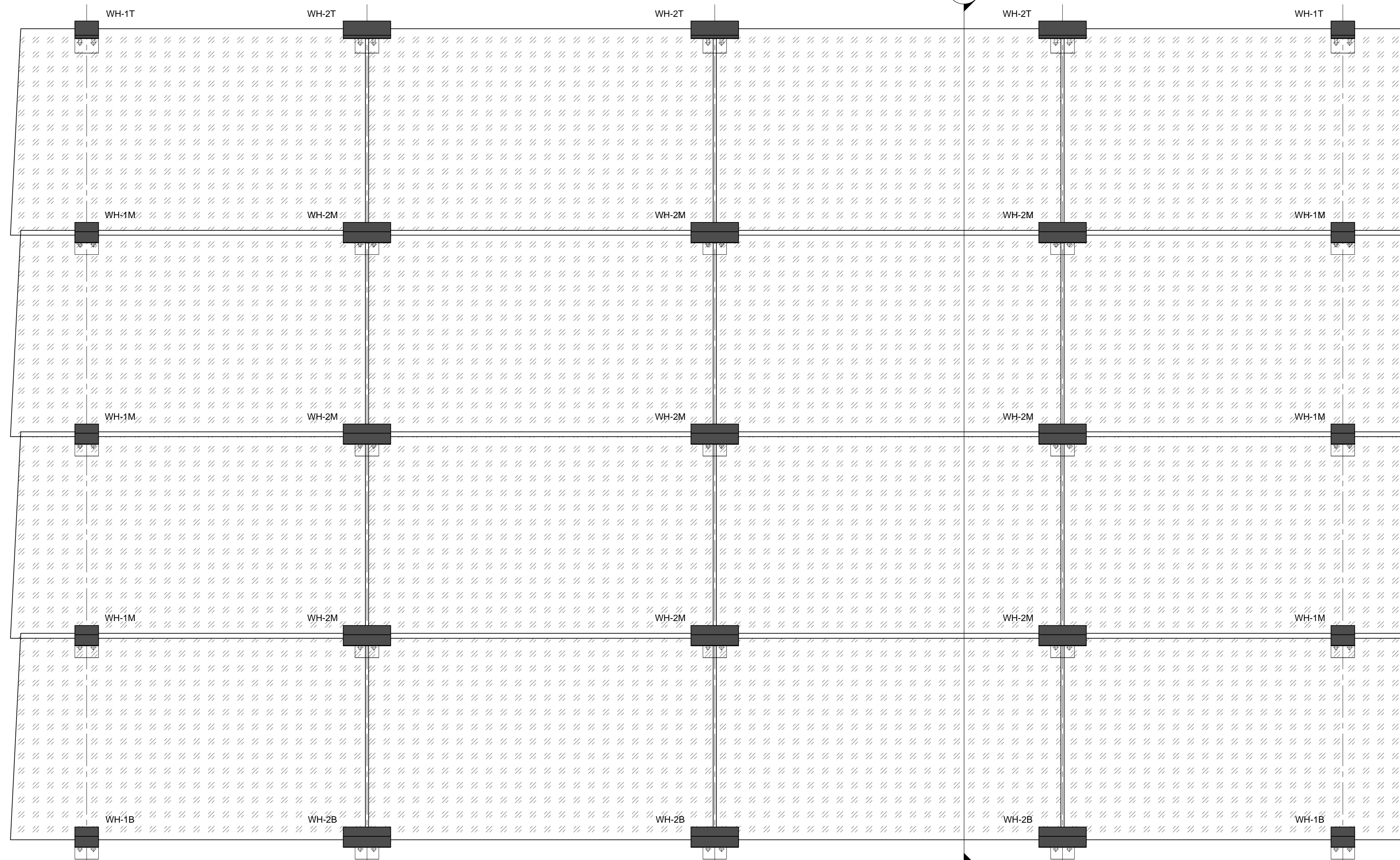
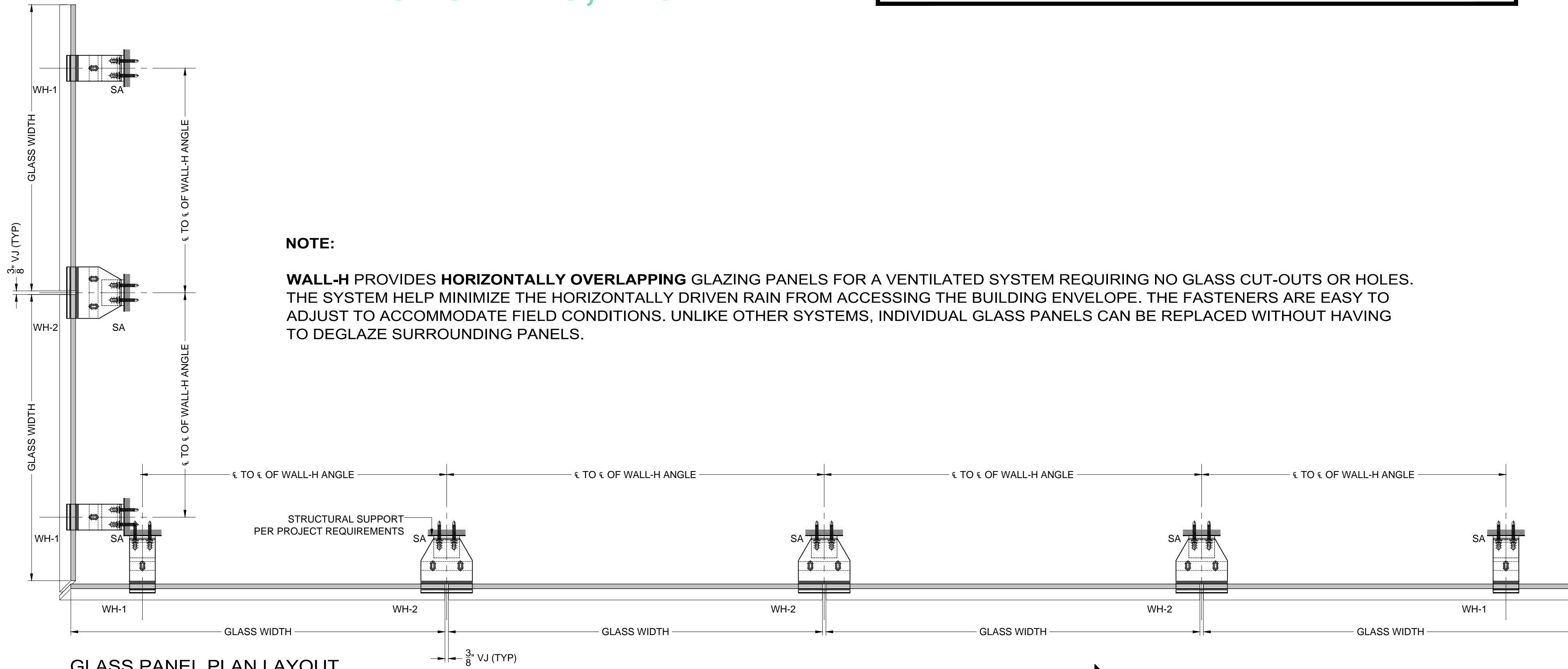


NOTE:

WALL-H PROVIDES HORIZONTALLY OVERLAPPING GLAZING PANELS FOR A VENTILATED SYSTEM REQUIRING NO GLASS CUT-OUTS OR HOLES. THE SYSTEM HELPS MINIMIZE THE HORIZONTALLY DRIVEN RAIN FROM ACCESSING THE BUILDING ENVELOPE. THE FASTENERS ARE EASY TO ADJUST TO ACCOMMODATE FIELD CONDITIONS. UNLIKE OTHER SYSTEMS, INDIVIDUAL GLASS PANELS CAN BE REPLACED WITHOUT HAVING TO DEGLAZE SURROUNDING PANELS.



ALL DESIGNS PATENTED AND PROTECTED.



ABBREVIATIONS:

- WH-1T: WALL HORIZONTAL TOP SINGLE FITTING
- WH-2T: WALL HORIZONTAL TOP DOUBLE FITTING
- WH-1M: WALL HORIZONTAL MIDDLE SINGLE FITTING
- WH-2M: WALL HORIZONTAL MIDDLE DOUBLE FITTING
- WH-1B: WALL HORIZONTAL BOTTOM SINGLE FITTING
- WH-2B: WALL HORIZONTAL BOTTOM DOUBLE FITTING
- VJ: VERTICAL JOINT BETWEEN GLASS
- GB: GLASS BITE
- GS: GLASS SIZE

