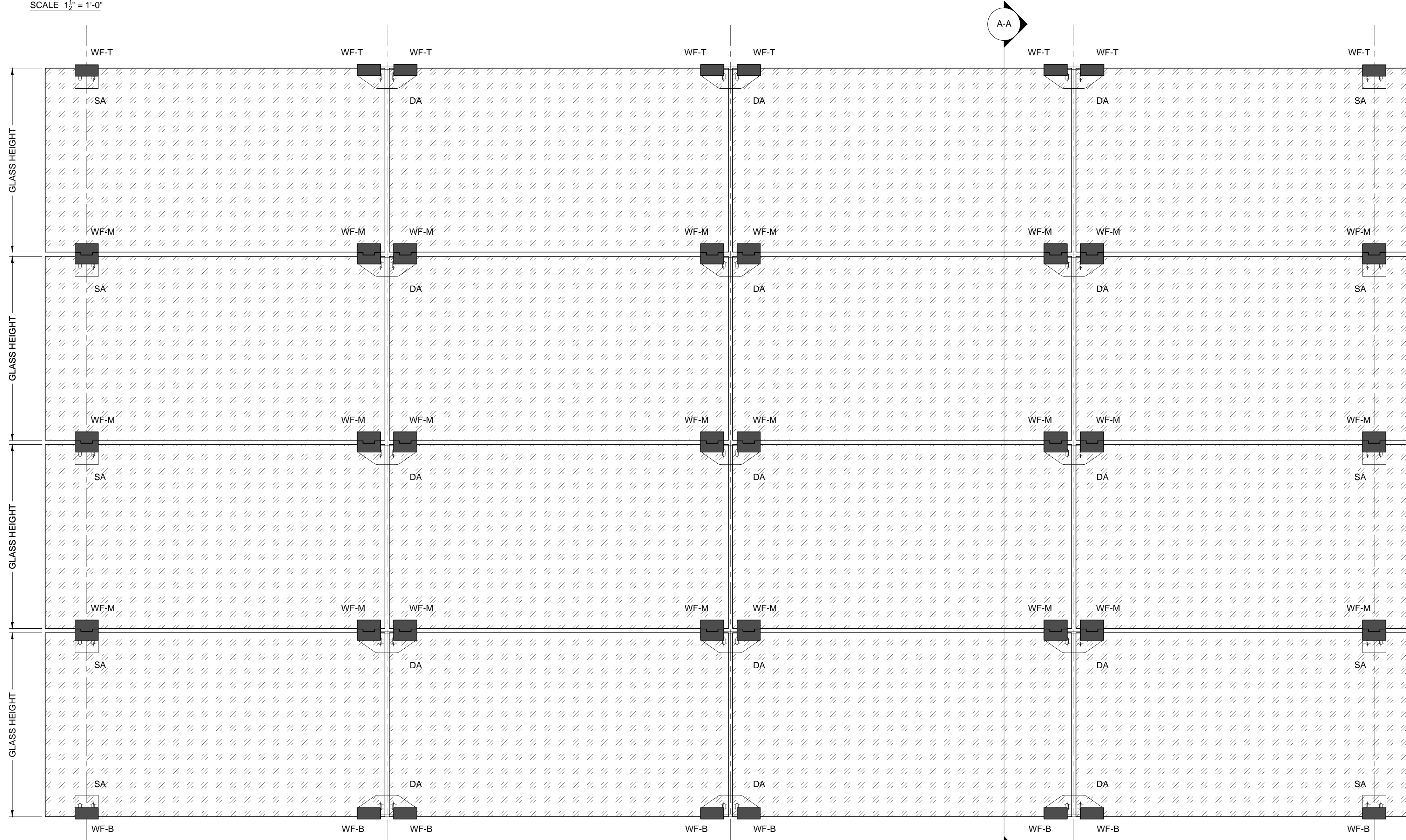
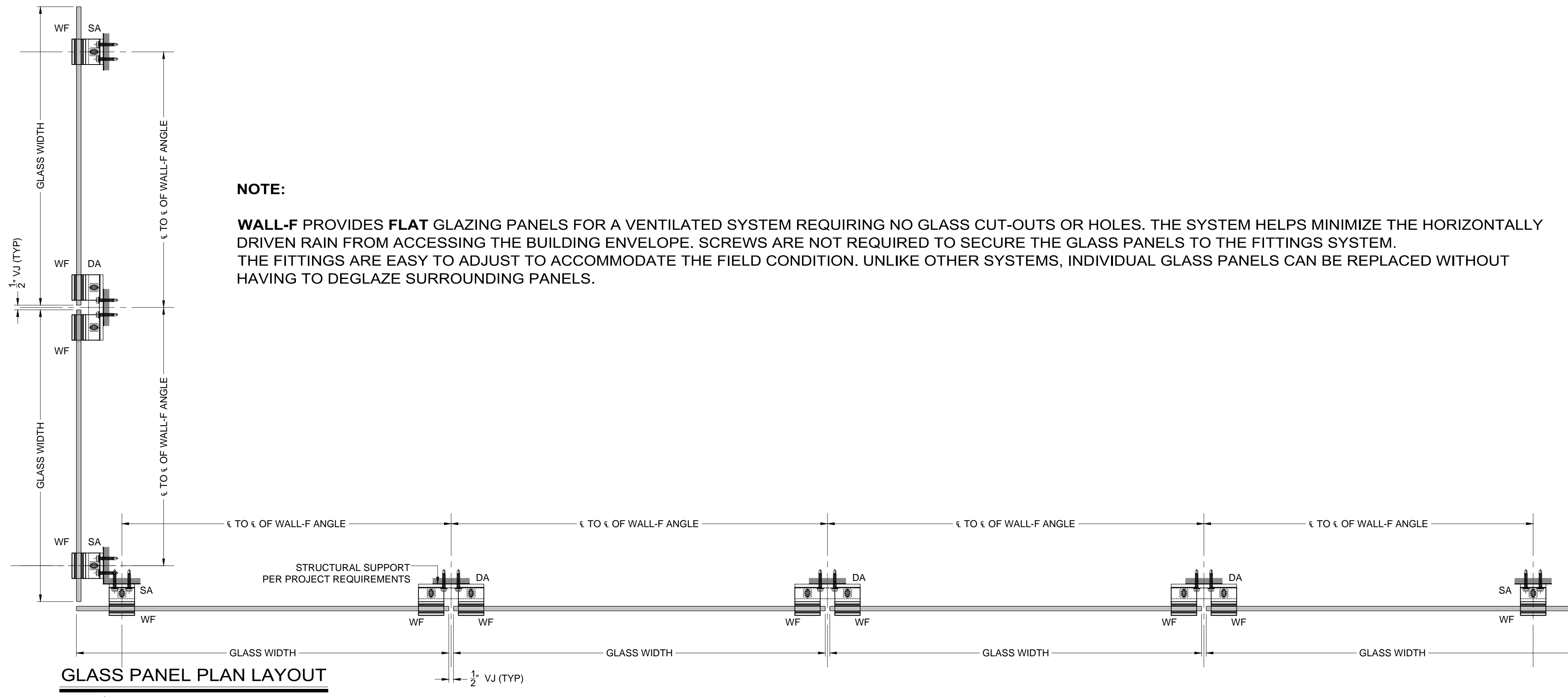


NOTE:

WALL-F PROVIDES FLAT GLAZING PANELS FOR A VENTILATED SYSTEM REQUIRING NO GLASS CUT-OUTS OR HOLES. THE SYSTEM HELPS MINIMIZE THE HORIZONTALLY DRIVEN RAIN FROM ACCESSING THE BUILDING ENVELOPE. SCREWS ARE NOT REQUIRED TO SECURE THE GLASS PANELS TO THE FITTINGS SYSTEM. THE FITTINGS ARE EASY TO ADJUST TO ACCOMMODATE THE FIELD CONDITION. UNLIKE OTHER SYSTEMS, INDIVIDUAL GLASS PANELS CAN BE REPLACED WITHOUT HAVING TO DEGLAZE SURROUNDING PANELS.

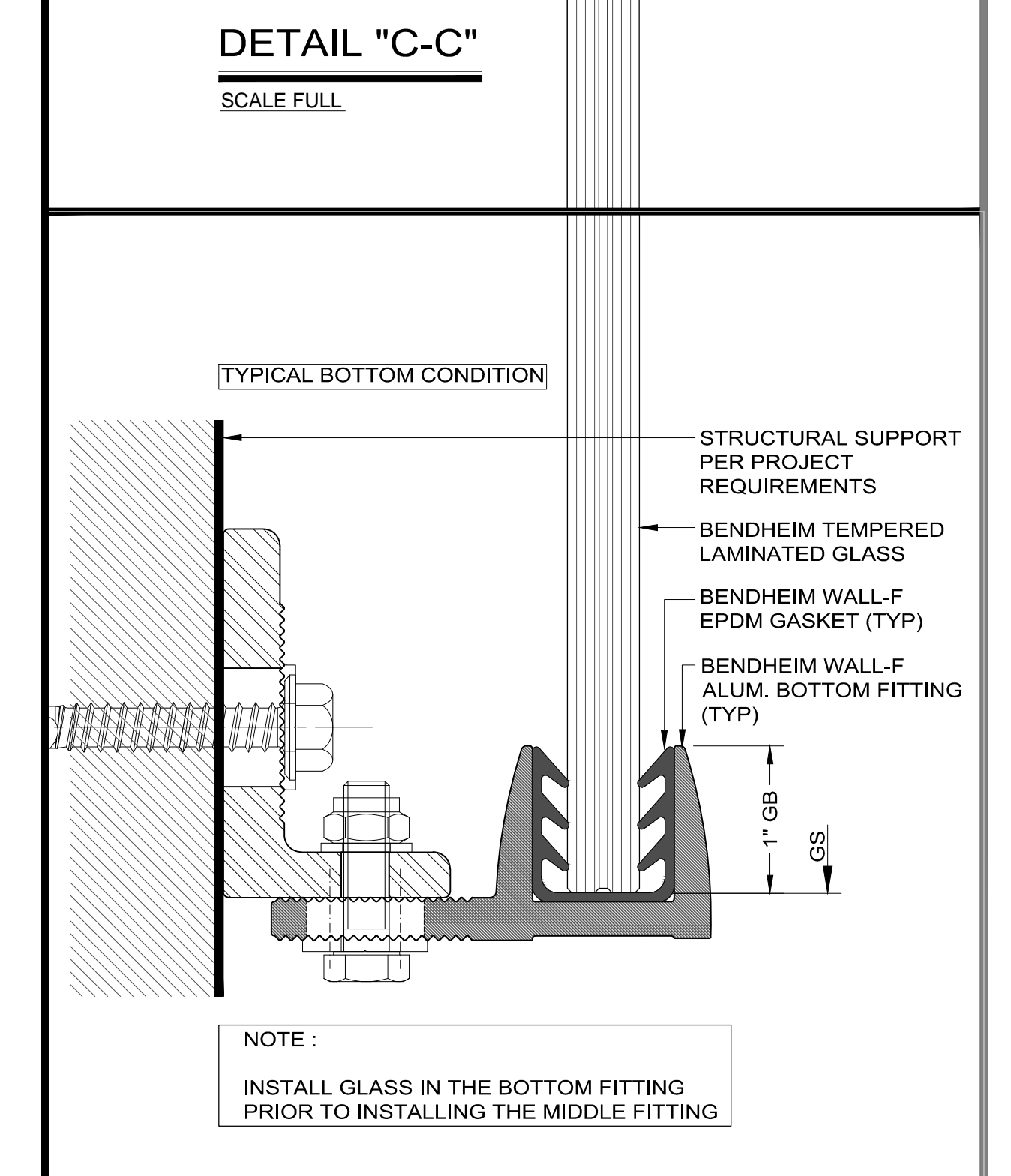
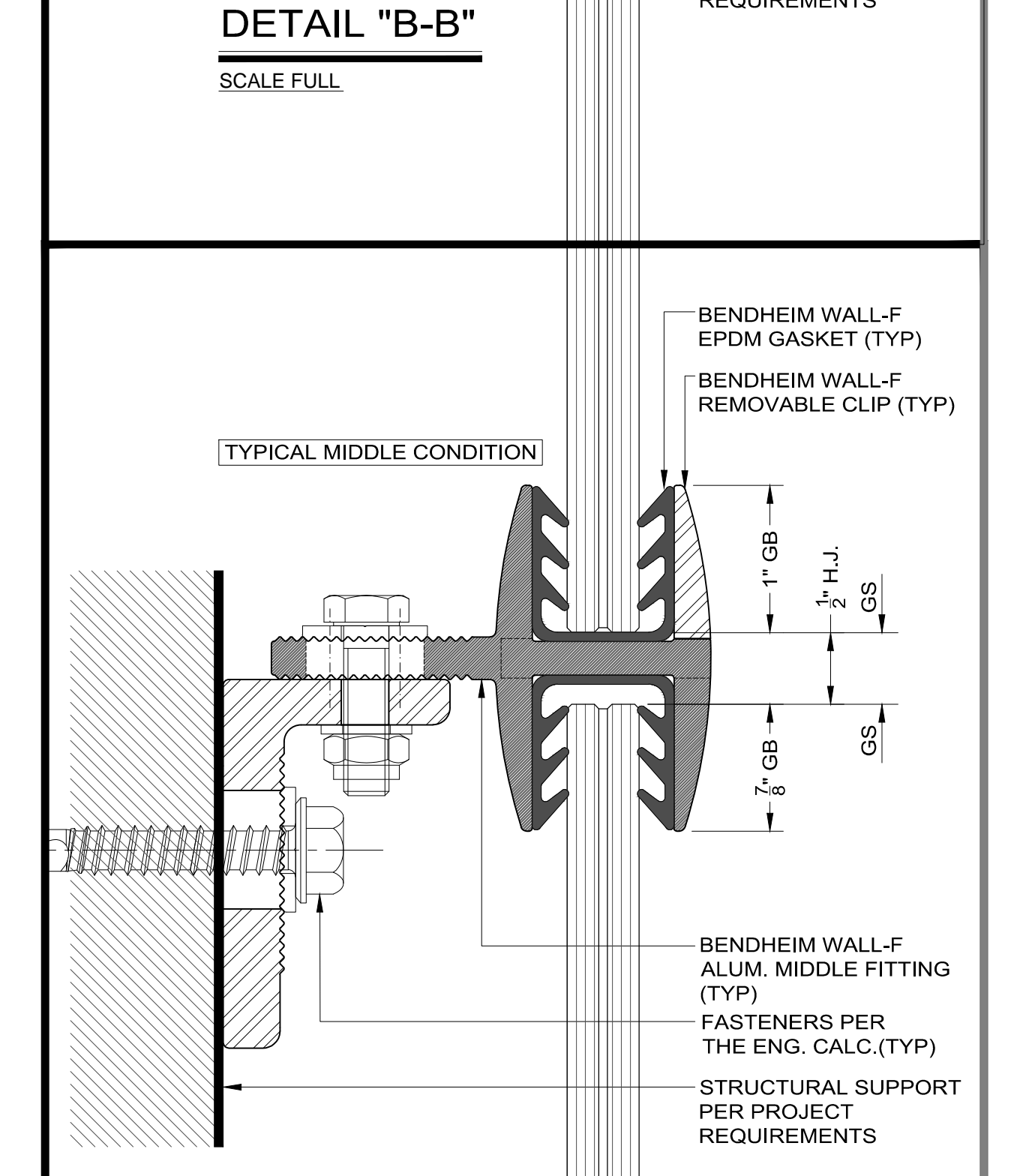
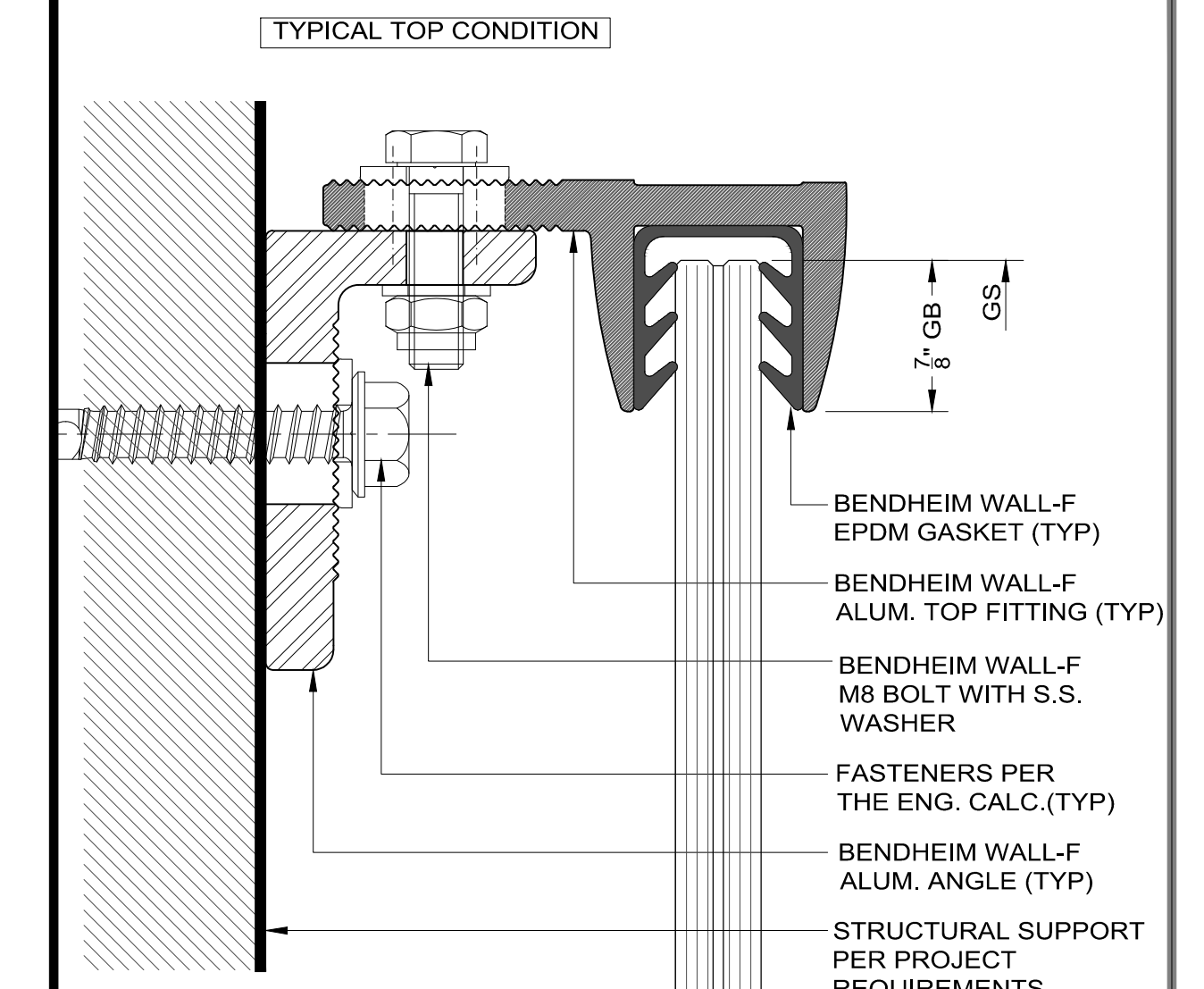
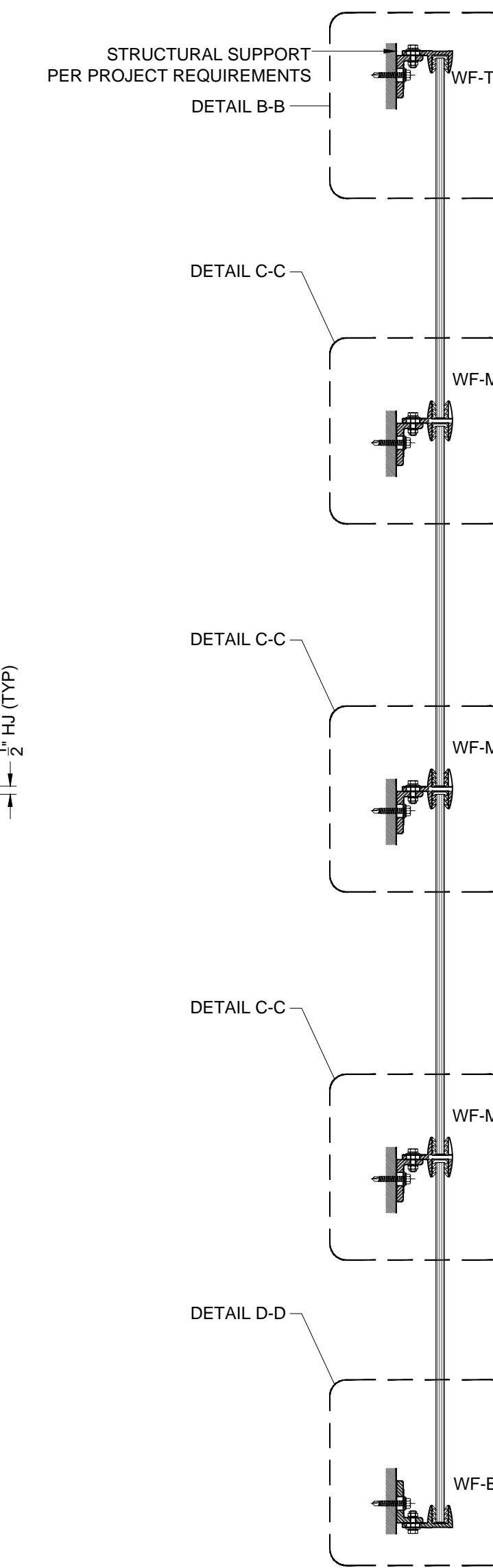


ALL DESIGNS PATENTED AND PROTECTED.



ABBREVIATIONS:

- WF-T: WALL FLAT TOP
- WF-M: WALL FLAT MIDDLE
- WF-B: WALL FLAT BOTTOM
- SA: SINGLE ANGLE TO ATTACH FITTINGS
- DA: DOUBLE ANGLE TO ATTACH FITTINGS
- VJ: VERTICAL JOINT BETWEEN GLASS
- HJ: HORIZONTAL JOINT BETWEEN GLASS
- GB: GLASS BITE
- GS: GLASS SIZE



NOTE:
INSTALL GLASS IN THE BOTTOM FITTING PRIOR TO INSTALLING THE MIDDLE FITTING